



Institutional Effectiveness Presents:



**Conversations
about Winthrop Data**

S/U Grade Analysis

October 9, 2024



Agenda

- Introduction to the Student Success Partners Series
- Data Literacy
- S/U Grading Analysis
- Table Conversations – S/U Course Data
- Large Group Conversations
- Wrap-up
- Next Session





Student Success Partners: Conversations about Winthrop Data

- Data Transparency
- Student Success
- Conversations
- Partners





What is your Role?

- Not a committee or task force – simply a gathering of like-minded individuals invested in seeing our students succeed.
- Listen, participate, and take actionable information back to your office/division/program/college for consideration.
- **Bonus:** Look at and discuss data across divisions. Draw different data sets together around a particular concern. Generate ideas for a new study. Share some of your data.





Data Literacy

- Data – Scary word?
- Data Literacy – Even scarier words?
- We are here to help you...
- Data literacy is the ability to read, understand, and communicate data as information.





Department of IE Staff

- Dr. Noreen Gaubatz – Director of Institutional Effectiveness and SACSCOC Liaison
- Dr. Zach Abernathy – Educational Data Scientist and Professor of Mathematics
- Dr. KB Gwebu – Director of Assessment
- Maria Linn – Director of Institutional Research
- Kelly Scott – Senior Data Analyst
- Nancy Scurry – Budget, Personnel, and Business Analyst





About the Data

Dr. Zach Abernathy, Educational Data Scientist and
Professor of Mathematics





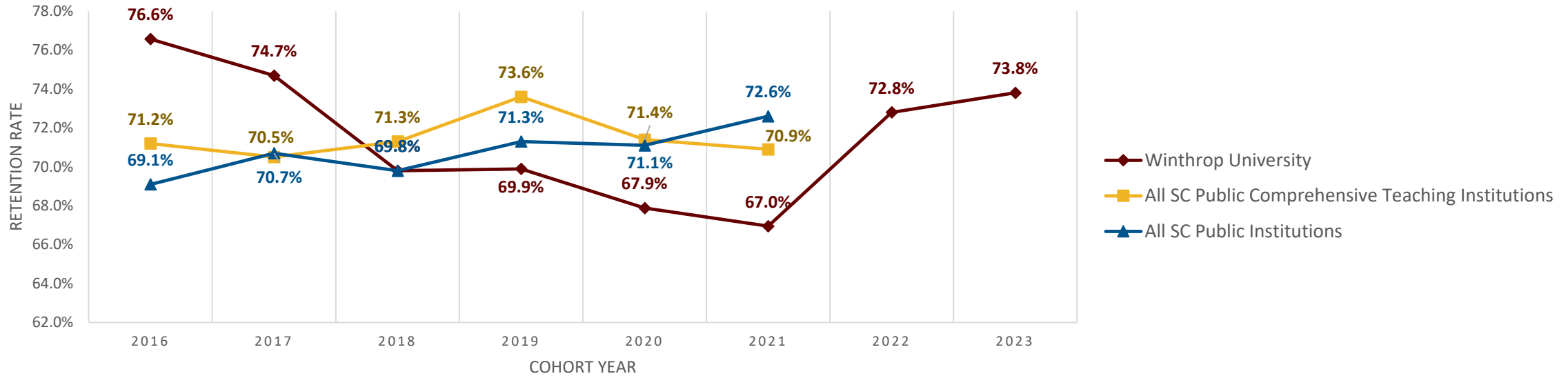
What is the S/U Grade Analysis?

- Study requested in Spring 2023 by the Assistant Dean for Academic Success (University College).
- Aims to address two questions centered around how freshmen use the S/U policy:
 - Are first-time freshmen effectively using the S/U option to maintain their LIFE scholarship or avoid academic probation?
 - Which courses provide the largest gain to GPA when taken S/U?

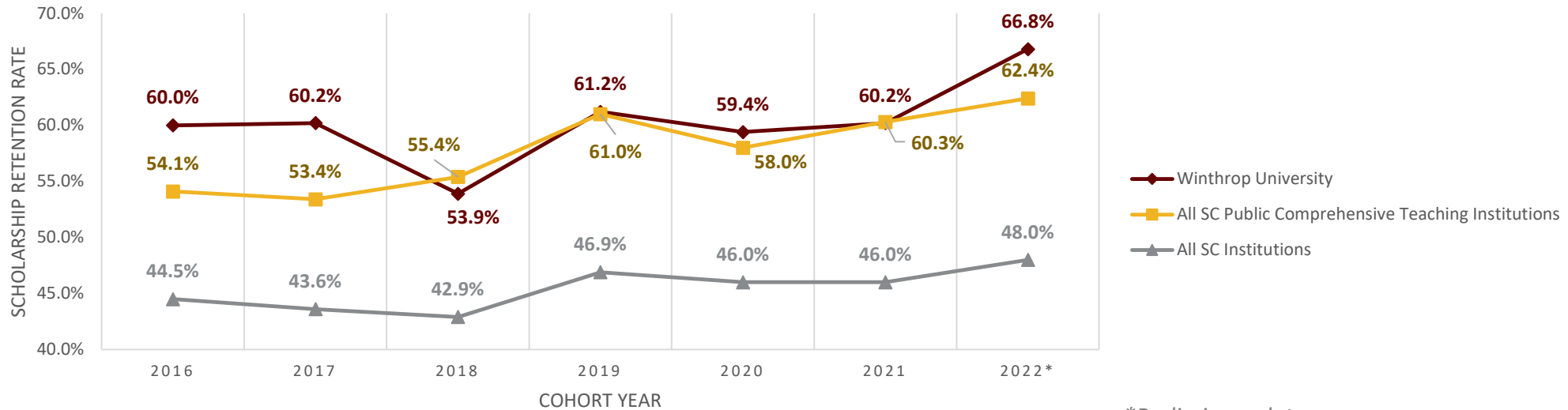


Why do we collect these data?

FALL-TO-FALL RETENTION RATES OF FIRST-TIME, FULL-TIME FRESHMEN



FIRST-TIME, FULL-TIME FRESHMEN LIFE SCHOLARSHIP RETENTION RATE



*Preliminary data



What's available & where?

One-page overview

(F/S only)

S/U USAGE ANALYSIS

Department of Institutional Effectiveness

Research Questions:

- Are first-time freshmen effectively using the S/U option to maintain their LIFE scholarship or avoid academic probation?
- Which courses provide the largest gain to GPA when taken S/U?

Study Parameters:

- First-time freshman grades from Fall 2021 through Spring 2024
- 1128 students' GPAs were between 2.000 - 2.999
- 879 students' GPAs were below 2.000

LIFE Scholarship
48% of students (n=536) could have earned a GPA ≥ 3.0 with 1 or 2 S/Us.

Academic Probation
31% of students (n=272) could have earned a GPA ≥ 2.0 with 1 or 2 S/Us.

403 could have achieved using 1 S/U
133 could have achieved using 2 S/Us
210 could have achieved using 1 S/U
62 could have achieved using 2 S/Us

Not all S/Us are equal in maximizing GPA

Example 1 - GPA with no S/U = 2.785

Course	Credit Hours	Grade	GPA if S/U used on course
WRIT 101	3	A	
PSYC 101	3	A-	
PHIL 101	3	C	3.000
ACAD 101	1	D-	2.948
FREN 101	4	C+	2.968

Example 2 - GPA with no S/U = 2.762

Course	Credit Hours	Grade	GPA if S/U used on course
WRIT 101	3	A	
PSYC 101	3	A-	
PHIL 101	3	C+	2.880
ACAD 101	1	D-	2.923
FREN 101	4	C	3.067

Exploring the relationship between interim and final grades

COURSE	AVG. INTERIM GRADE	AVG. FINAL GRADE
DANA 101	3.813	2.667
ARTH 176	2.598	1.975
EXSC 208	2.866	3.334
BADM 250	2.290	2.728

IMPACT

- Student Advising
- Student Retention

See full report and data for all courses @ S/U Analysis

S/U Analysis Reports & Data

(F/S only)

SharePoint

IR Winthrop Data (Login Required)

Documents

Documents > S U Analysis

Name	Modified	File Size
2023-24	4 days ago	4 items
SSP session_10.9.2024	4 days ago	2 items
SU Usage Analysis Full Report.pdf	August 1, 2023	819 KB
SU Usage Analysis Overview.pdf	4 days ago	150 KB



S/U Underutilization

Are first-time freshmen effectively using the S/U option to maintain their LIFE scholarship or avoid academic probation?

- From Fall 2021 through Spring 2024, there were 1128 freshmen with a first-term semester GPA between 2.000 and 2.999.
- **536 of these 1128 students (47.5%) could have achieved a semester GPA of 3.000 or higher by using 1 or 2 additional S/Us optimally.**





S/U Underutilization

Are first-time freshmen effectively using the S/U option to maintain their LIFE scholarship or avoid academic probation?

- From Fall 2021 through Spring 2024, there were 879 freshmen with a first-term semester GPA less than 2.000.
- **272 of these 879 students (30.9%) could have achieved a semester GPA of 2.000 or higher by using 1 or 2 additional S/Us optimally.**





How to Maximize GPA using S/U?

Which courses provide the largest gain to GPA when taken S/U?

Two new data points for each course to help inform S/U decisions:

- Difference between average interim grade and average final grade
- Ratio of times that the course would have been the best choice to S/U





Using Data to Support S/U Decisions

Difference between average interim grade and average final grade

Course	Avg Interim Grade	Avg Final Grade	Avg Final Grade – Avg Interim Grade
DANA101	3.533	2.720	-0.812
ENGL211	2.778	2.045	-0.733
SPMA250	2.917	2.223	-0.694
FREN101	2.897	2.206	-0.692
MATH202	2.915	2.250	-0.665
...
SPMA101	1.718	2.346	+0.628
GEOL113	2.428	3.101	+0.673
PSYC213	1.939	2.687	+0.747
MATH261	2.100	2.901	+0.801
SOCL325	2.524	3.380	+0.856





Using Data to Support S/U Decisions

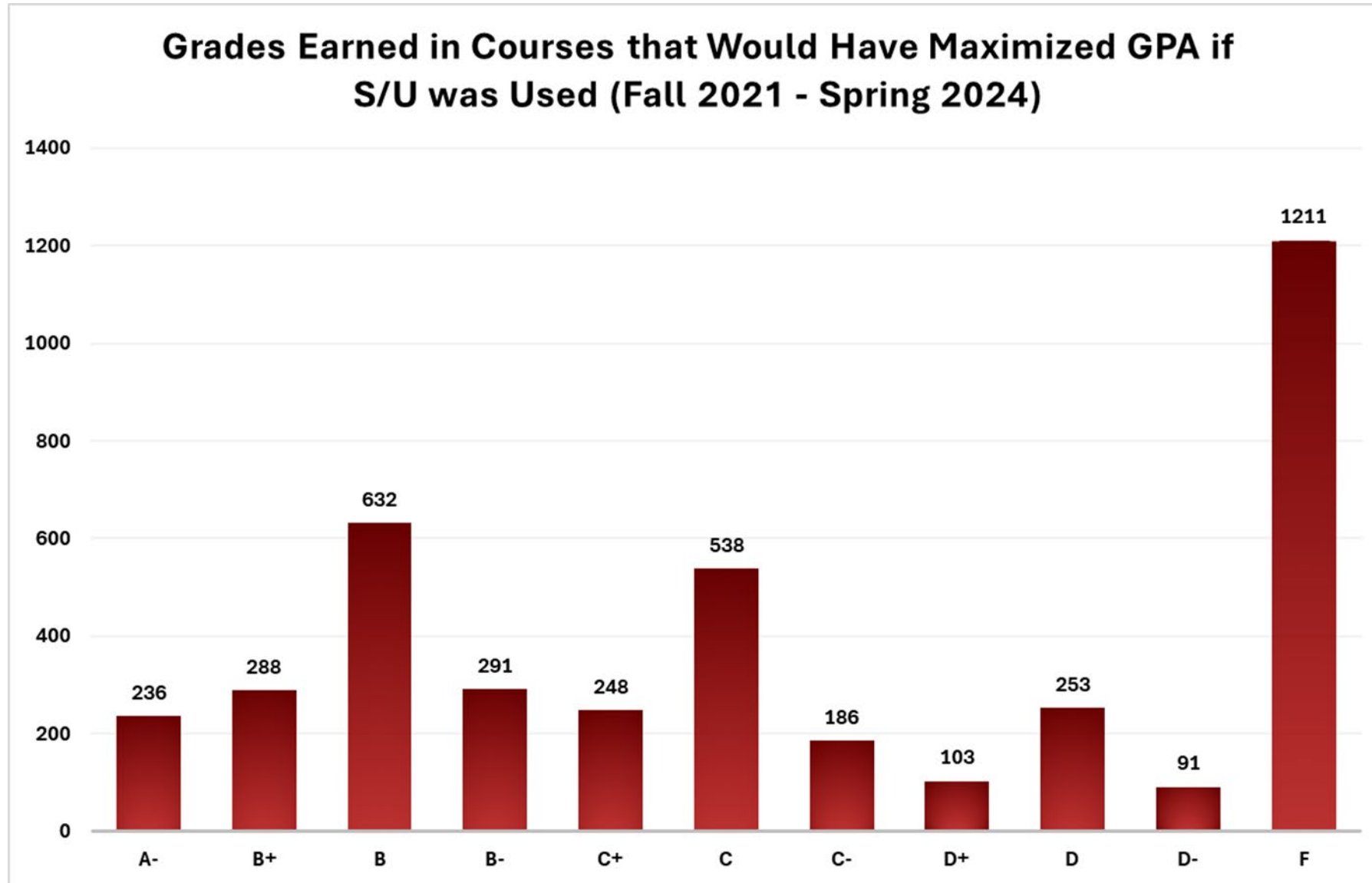
Ratio of times that the course would have been the best choice to S/U

Course	# Times Best Course to S/U	# Times Course Taken	Ratio of Times Best Course to S/U vs. Course Taken
ENGL211	11	18	0.6111
DESF113	27	46	0.5870
MATH201	24	44	0.5455
CHEM101	10	21	0.4762
ANTH220	5	11	0.4545
...
MUTC121	3	49	0.0612
MUSA181	4	77	0.0519
CSCI101A	5	97	0.0515
PESH102	8	159	0.0503
MUSA112	1	30	0.0333

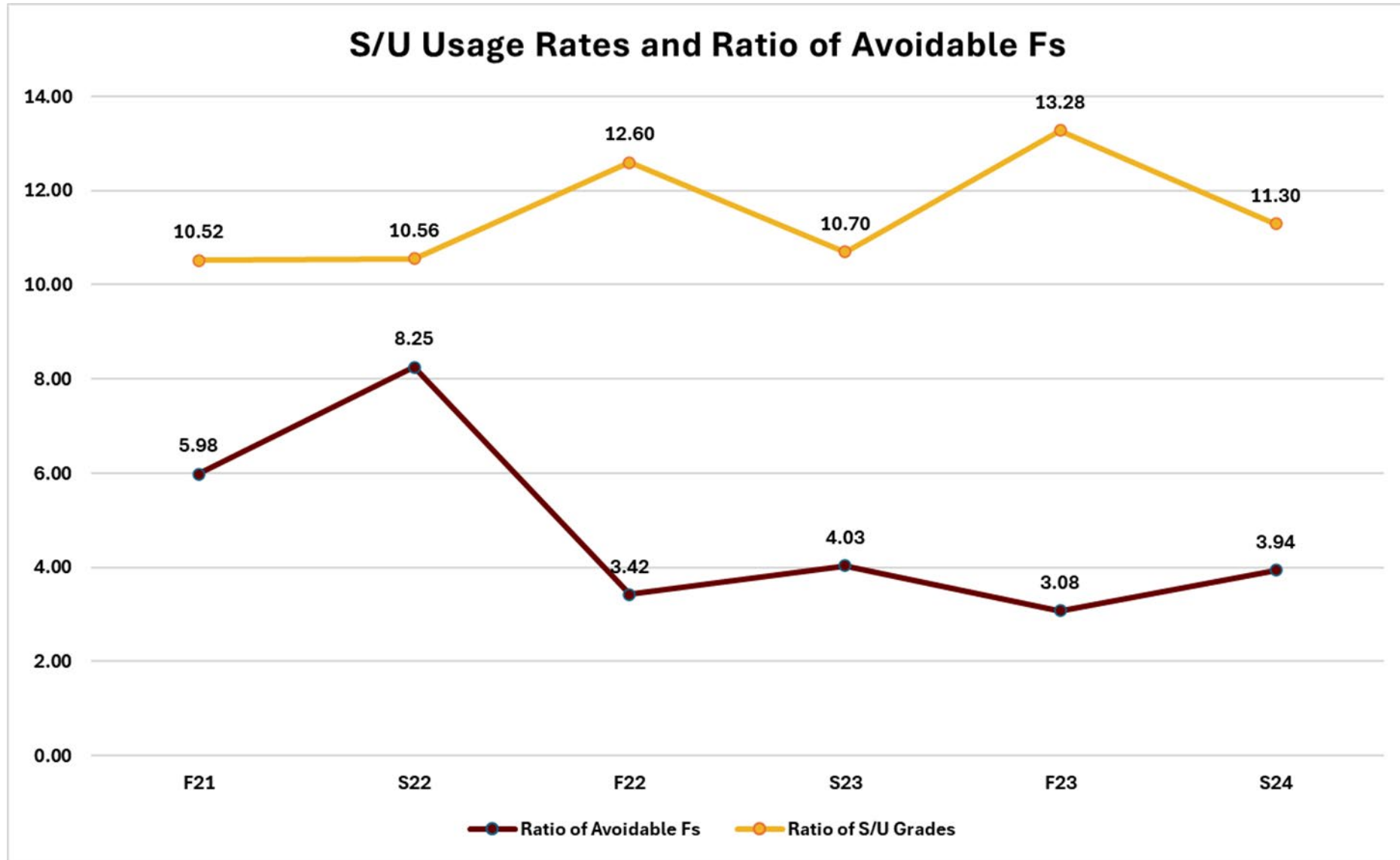




What Happens When Students Don't S/U?



Historical Data Trends

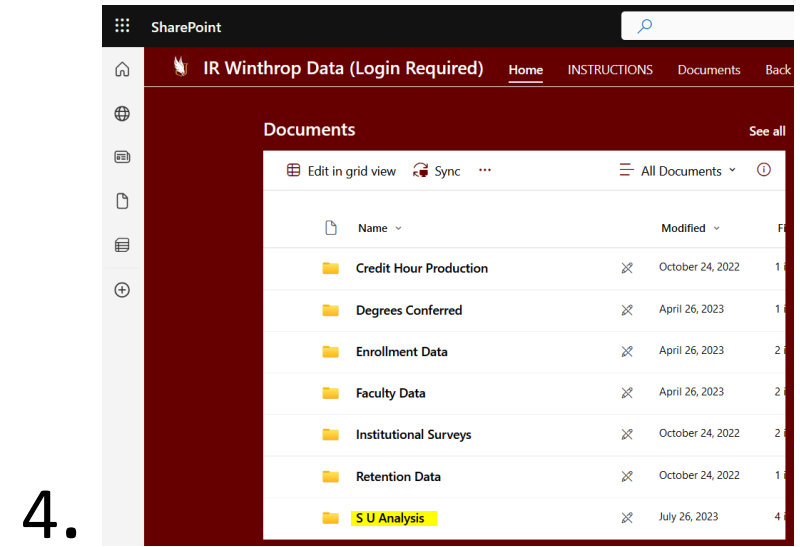
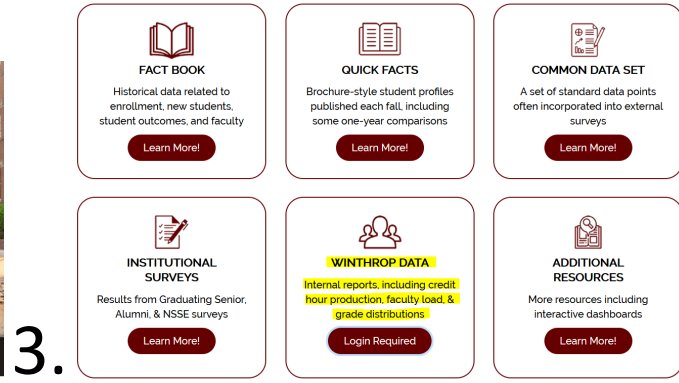
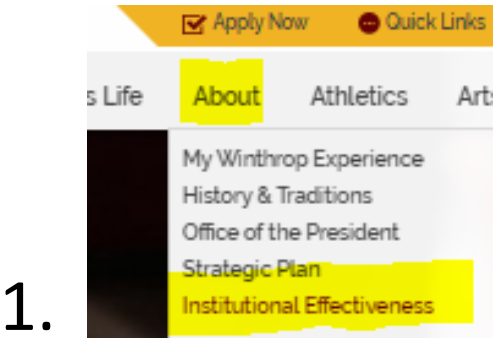




Let's Navigate to SharePoint

URL: www.winthrop.edu/ie/sharepoint-site

Or click through from www.winthrop.edu:





Guiding Questions

Explore the two lists of courses and discuss the SharePoint data with a partner. Jot down notes to share with the group.

1. Are there courses discussed in your area with anecdotal reputations regarding student success? How do these data correlate with those reputations?
2. What else did you learn from the data? What surprised you?
3. Do these data raise other questions?





Wrap-Up

- **Thank you** for attending! **Vinyl sticker** is our departing gift to you.
- Feel free to take the **S/U Grade Analysis handout** with you for future reference.
- Please, complete an **evaluation form** – on paper or scan the QR code.





Join us for our next session!

*Student
Success*

PARTNERS

NSSE - National Survey of Student Engagement

***Conversations
about Winthrop Data***

Wednesday, Nov. 13, 2024

2:00-3:15 p.m.

DiGs 114

www.winthrop.edu/ie/ssp