



WINTHROP  
UNIVERSITY

# RESIDENCE LIFE

*advantage*



# RESIDENCE LIFE

## *advantage*

### The Residence Life Mission Statement

Residence Life is dedicated to supporting and encouraging the personal development and academic success of each student in our residential community through purposeful programs and services that complement the total educational experience at Winthrop University.

#### RESIDENCE LIFE IS COMMITTED TO:

- > Fostering a residential community that values civility, integrity, an appreciation of differences and excellence.
- > Assessing and enhancing services that address the continuously changing needs of the residential environment.
- > Providing a professionally trained staff based upon student development theory.
- > Maintaining partnerships with campus colleagues that ensure the quality of residential living.

## How to Apply for Housing

Complete your Housing Application Form and digitally sign the Residence Hall Contract online using Eaglesnest.

Your housing application will be processed upon receipt of your \$300 Enrollment Deposit. Visit your Admissions Portal to pay the deposit: [apply.winthrop.edu/admit](https://apply.winthrop.edu/admit)

#### Important Dates:

**MAY 1:** Housing application and signed Residence Hall Contract priority deadline. If you apply by May 1, you will receive a housing assignment by mid-June.

**May 25:** Priority deadline for submitting Roommate Group (roommate preference).

Housing preferences are honored on a space available basis.

# Introduction

As you will discover, Winthrop’s residence life program has real advantages – it’s designed with benefits that make living well and learning easier during your time here.

*All first- and second-year Winthrop students are required to live on campus and have their choice of a variety of housing options. By living on campus, students have unique opportunities to establish lifelong friendships, to participate in exciting activities, and to feel truly connected to the university. Residence Life offers a number of resources including programming, support, and dining services that add to the convenience of living close to classes, which makes on-campus living at Winthrop the ideal environment for success.*

## TABLE of CONTENTS

INTRODUCTION

1

RESIDENTIAL CURRICULUM *and* ACADEMIC SUCCESS COMMUNITIES

2

RESIDENCE HALLS

5

FEATURES of OUR RESIDENCE HALLS

10

COMMON QUESTIONS

12

DINING SERVICES

14

CAMPUS MAP

16



## CHECK OUT *the* RESIDENCE LIFE ADVANTAGES

### THE POTENTIAL FOR BETTER GRADES - THE EXPERTS AGREE!

National research of college students shows that those who live on campus are more satisfied with their college experience, earn higher grade point averages and are more likely to graduate than their commuting peers.

### NO HIDDEN COSTS

You don’t have to worry about paying monthly rent, utility, Internet, purchasing furniture, securing maintenance services, laundry services or buying groceries. Your room and board (meal plan) are

placed on your student account each semester.

### CONVENIENCE

Living close to classes and campus resources means not having to worry about finding a parking space if you are running late for class, picking up mail or meeting friends for lunch.

### SUPPORT

Each residence hall has trained live-in staff consisting of a Resident Assistant (RA) on every floor and a full-time professional Residential Success Coordinator. The staff members work together as a team to assist you as you settle into college life.

## Residential Curriculum

All residential communities at Winthrop University promote learning beyond the classroom through our residential curriculum! Students have the opportunity to engage with faculty, staff, and peers about academics, personal development, and being a member of a community. Residence Life offers programming, individualized support, and resources about topics including safety, conflict management, positivity and self-care, academic success, resiliency, cultures, and civility.

## Honors

This community offers the opportunity to thrive on academic success and scholarship through the Winthrop University Honors Program.

## Core Values

- **Community**

We are committed to fostering a community where students feel connected to Winthrop and each other.

- **Resiliency**

We desire to help students grow personally while living in the residence halls. Learning more about the person you want to become, helping others, and dealing with conflict are all parts of the residential experience at Winthrop.

- **Safety**

We want students to feel safe in our residence halls. This includes physically safe through numerous security measures, but also safe to express themselves appropriately.



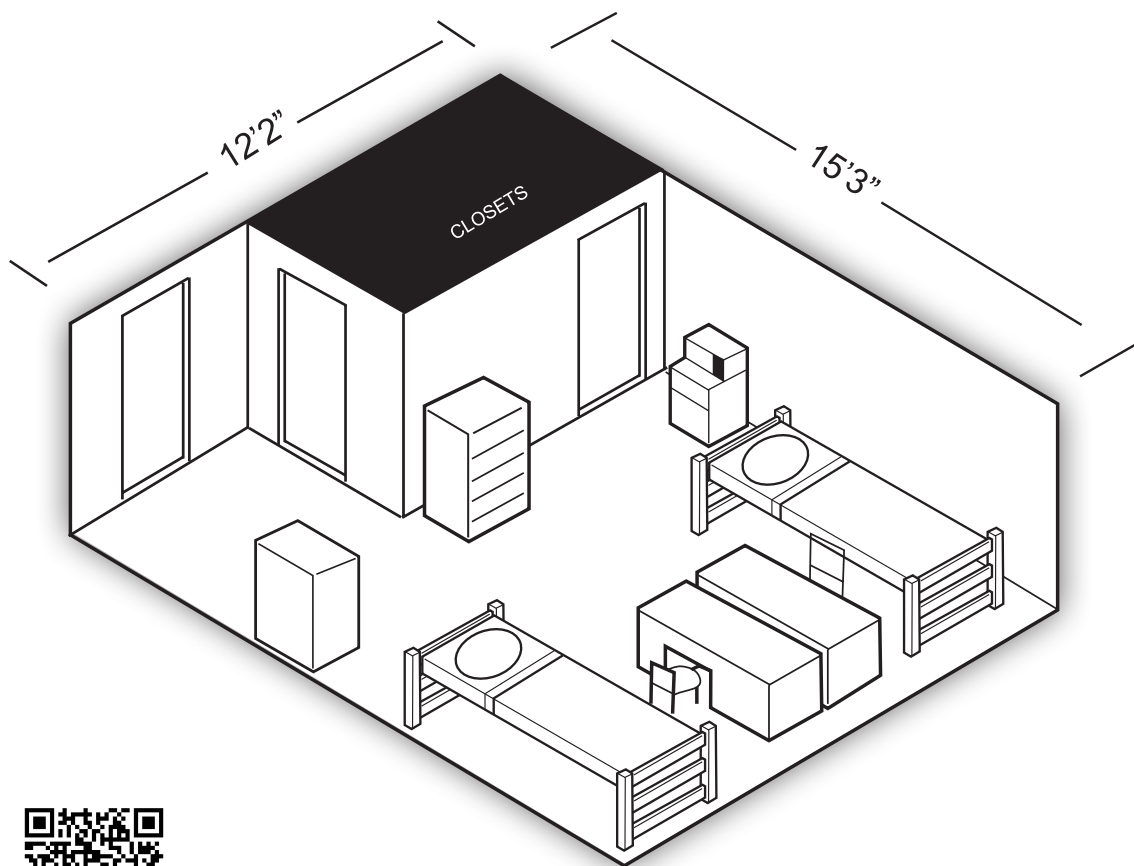


## Margaret Nance

- Traditional-style residence hall
- A classic, coed first-year college experience
- Strong sense of community and enthusiasm among residents
- Hall-style bathroom maintained by custodial staff
- Three fireplace lounges and parlor
- Interior hallways connect to several classroom buildings
- Located in the center of campus



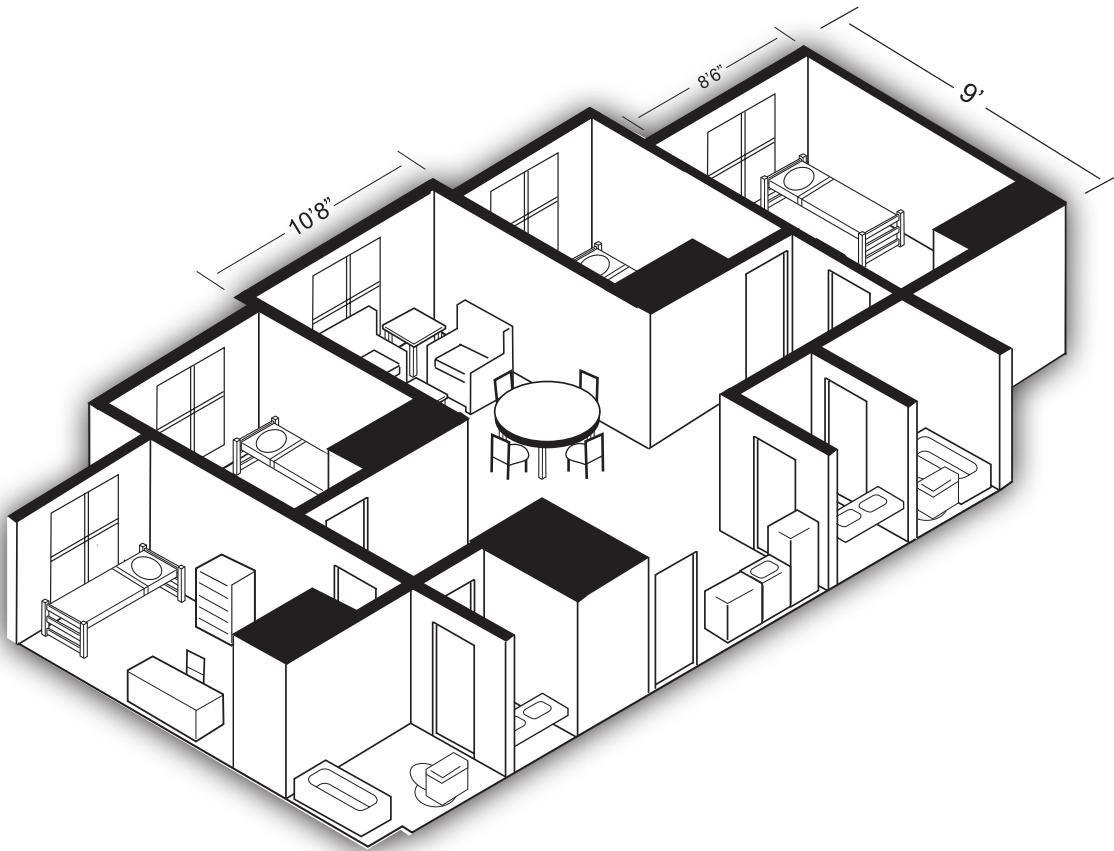
Margaret Nance Floor Plan



Take our panoramic room tour of Margaret Nance!



## The Courtyard at Winthrop Floor Plan



Take our panoramic room tour of the Courtyard at Winthrop!

*The Courtyard at Winthrop requires a separate application.*



## The Courtyard at Winthrop

- Private bedrooms in two- and four-room deluxe suites
- Each suite includes a washer, dryer, common area and and break area
- Home to the Honors Center
- Outdoor open courtyard area for leisure activities
- Close to the DiGiorgio Campus Center and West Center



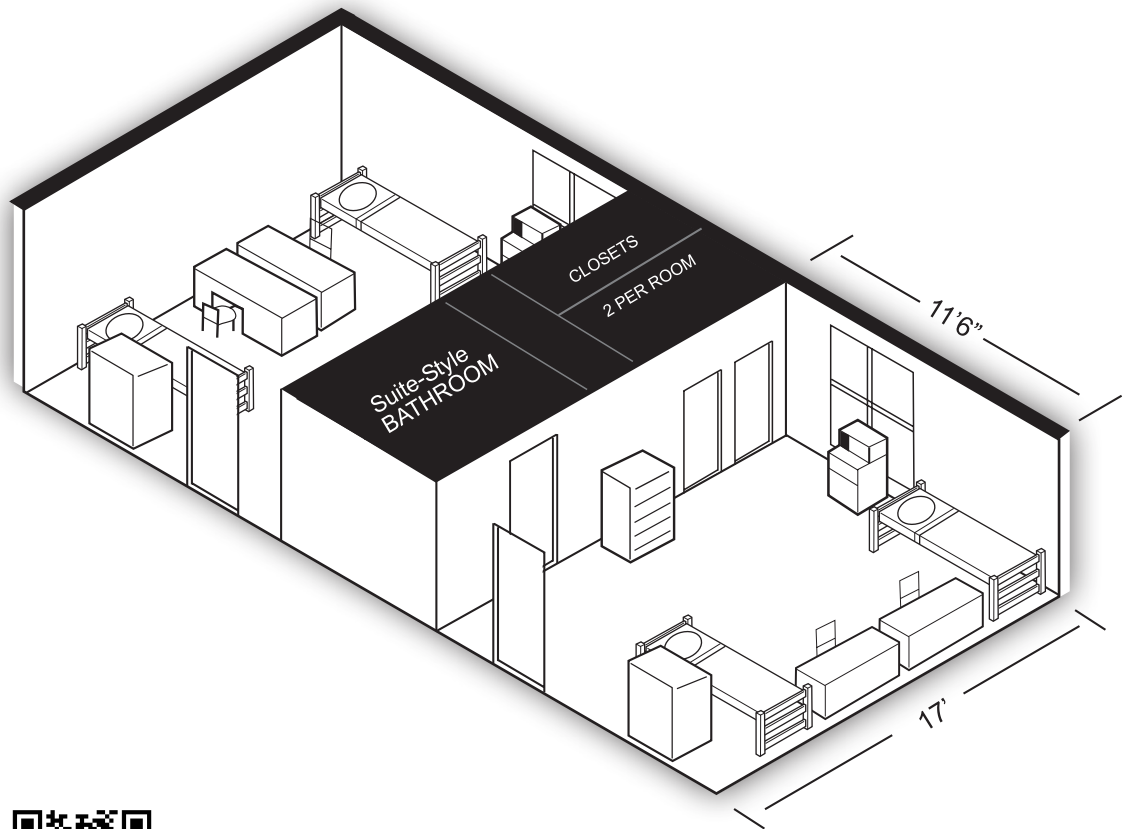


## Lee Wicker

- Suite-style residence hall
- Spacious lounges for playing pool, studying, watching TV or hanging out
- Close to the Eagle Eatery and the College of Business Administration



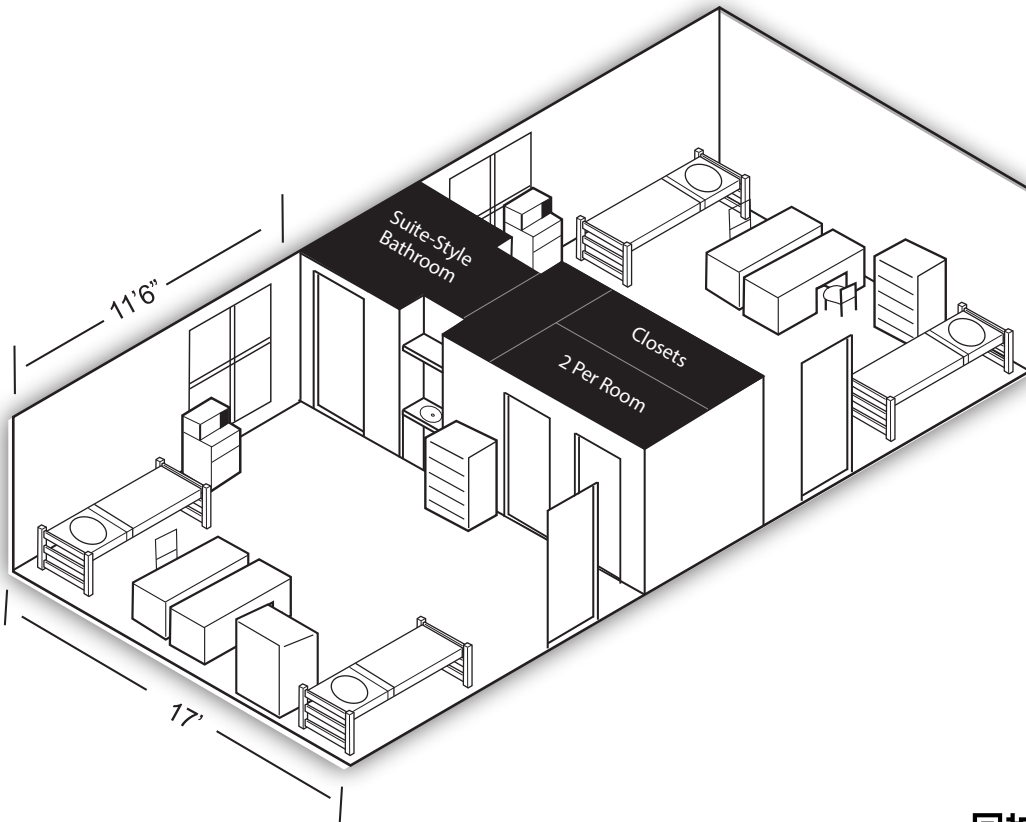
Lee Wicker Floor Plan



Take our panoramic room tour of Lee Wicker!



## Phelps Floor Plan



Take our panoramic room tour of Phelps!



## Phelps

- A predominantly upperclassmen suite-style hall
- Sinks located conveniently inside of each room
- Spacious lobby for studying, watching TV or hanging out
- Three laundry rooms for convenient access
- Close to the Eagle Eatery and the College of Business Administration



[www.winthrop.edu/reslife](http://www.winthrop.edu/reslife)

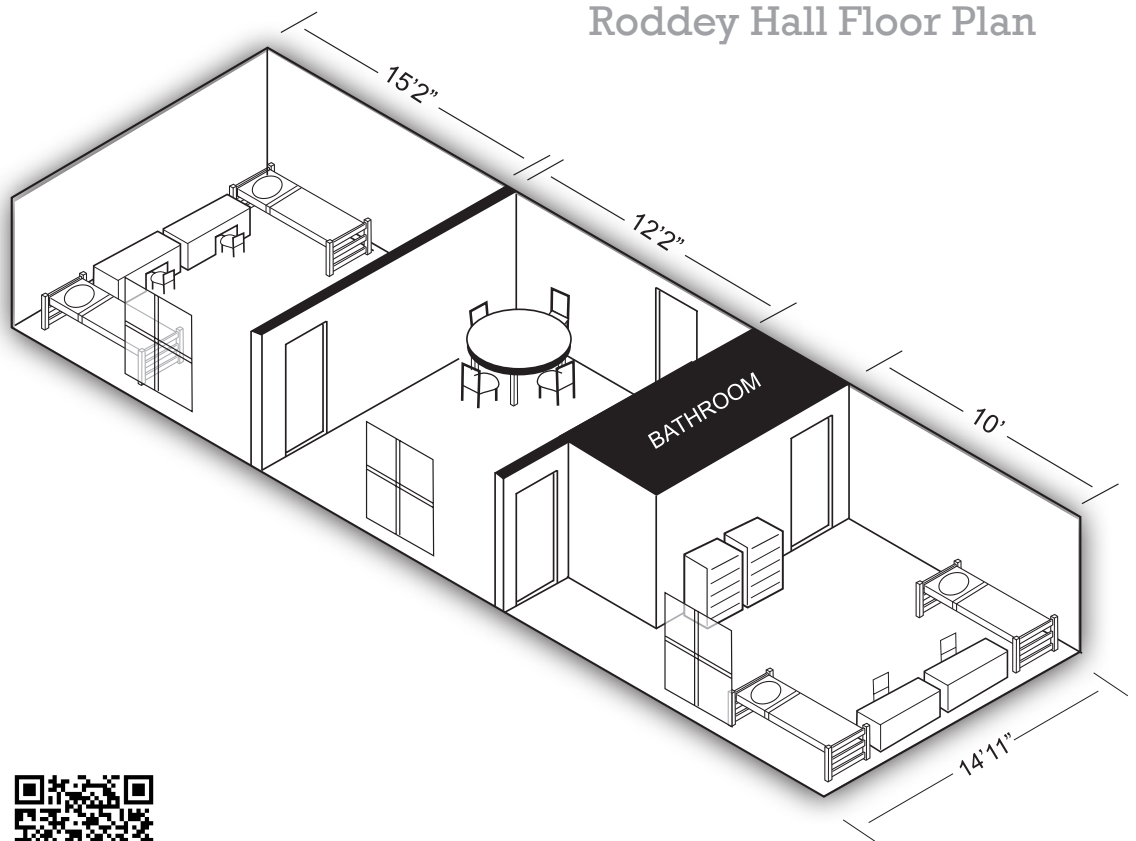


## Roddey Hall

- Two- and four-person furnished apartments, primarily for upperclassmen
- Each apartment includes a kitchenette with refrigerator, microwave and sink
- Open during university breaks
- Includes a courtyard and front porch with rocking chairs
- Located next to picturesque Hardin Family Garden and close to Scholars Walk

*Roddey offers one- and two-bedroom efficiency suites. In addition to bedrooms, each suite offers a living/dining area with efficiency kitchenette and one bathroom.*

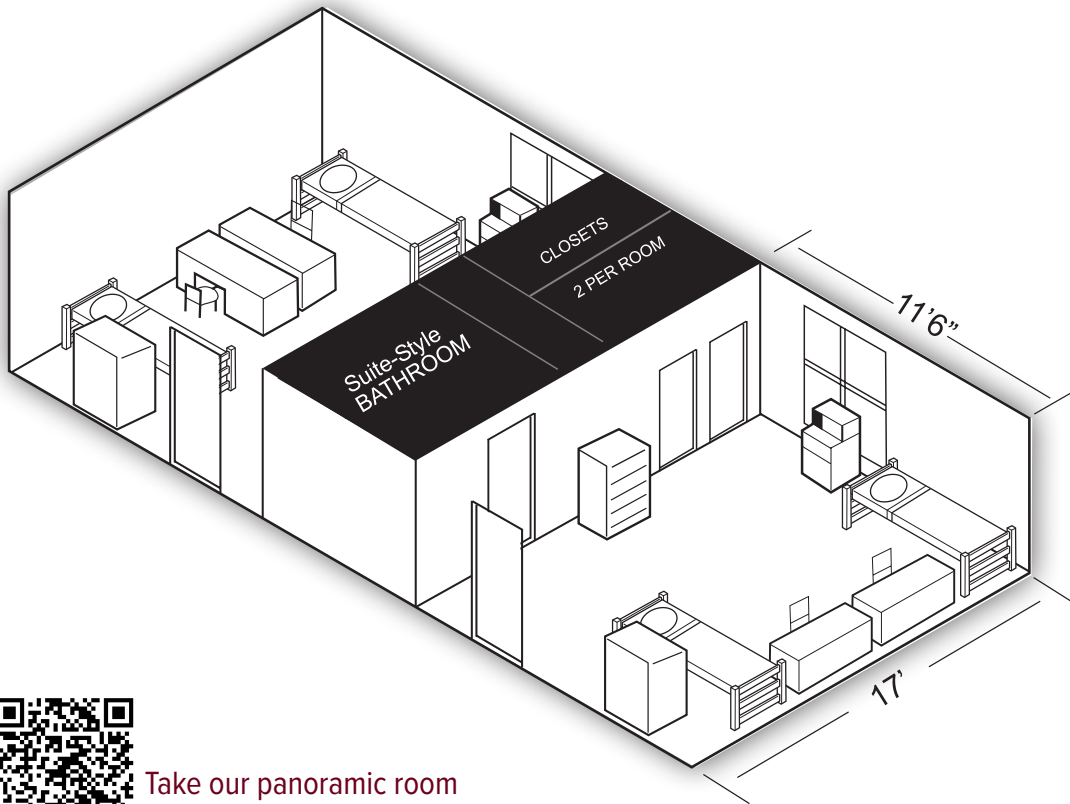
### Roddey Hall Floor Plan



Take our panoramic room tour of Roddey!



## Thomson (East & West) Floor Plan



Take our panoramic room tour of Thomson!



## Thomson (East and West)

- Suite-style residence hall
- Home to the Eagle Eatery and Eagle Express convenience store
- New room furniture with loftable beds
- Unique layout with East and West buildings, creating a smaller community feel
- Close to the College of Business Administration and science buildings



[www.winthrop.edu/reslife](http://www.winthrop.edu/reslife)

# Features *of* Our Residence Halls



	MARGARET NANCE	THE COURTYARD AT WINTHROP	LEE WICKER	PHELPS	RODDEY HALL	THOMSON (EAST & WEST)
Honors Housing		■		■		
Semi-Private Bath		■				
Suite Bath		■	■	■	■	■
Hall Bath	■					
Movable Furniture	■	■	■	■	■	■
Hallway Carpeting	■		■	■	■	■
Air Conditioning	■	■	■	■	■	■
MicroFridge®	■		■	■		■
Common Area TV	■	■	■	■		■
Elevator		■	■	■		
Study Areas	■	■	■	■	■	■
Meeting Rooms	■	■	■	■	■	■
Free Laundry Facilities	■	■	■	■	■	■
Hall Kitchen	■	■	■	■	■	■
Vending	■	■	■	■	■	■
Dining Facilities						■
Bike Racks	■	■	■	■	■	■
Window Blinds/Shades	■	■	■	■	■	■
Free WiFi	■	■	■	■	■	■
Tobacco-Free/Vapor-Free	■	■	■	■	■	■
Outside Door Card Access	■	■	■	■	■	■

## EACH TRADITIONAL ROOM FEATURES

- > Two extra long, 36" x 80," bunkable single beds with innerspring mattresses
- > Two desks
- > Two chest of drawers
- > Two desk chairs
- > Two closets or wardrobes
- > Air-conditioning
- > Streaming movies on Eagle Cinema On Demand
- > MicroFridge®

## THINGS *to* BRING

- |   |  |
|---|--|
| Bathrobe  | Organizational/ storage supplies         |
| Blankets  | Pillows                                  |
| Bookbag/backpack  | Plastic storage containers               |
| Can opener  | Raincoat                                 |
| Cleaning supplies (disinfectant wipes, duster, dish soap, etc.) | Room decorations (no candles or incense) |
| Coffee pot  | Rug                                      |
| Desk lamp (not halogen)   | School supplies                          |
| Digital television with QAM Tuner                               | Sheets (extra-long twin bed)             |
| Electrical surge protector/power strip                          | Shower caddy                             |
| Fan   | Shower shoes                             |
| First aid supplies  | Toiletries                               |
| Flashlight  | Towels                                   |
| Hair dryer  | Trash bags                               |
| Laundry supplies  | Umbrella                                 |
| Mattress cover  | Vacuum cleaner                           |
| Medical insurance information                                   | Wall adhesive (blue painter's tape only) |

## THINGS *not to* BRING

- > Pets
- > Extra furniture
- > Cooking appliances
- > Candles and incense
- > Contact paper
- > Wallpaper or borders
- > Halogen lamps
- > Extension cords without surge protection
- > Hoverboards
- > Router
- > Private/personal security camera



	WINDOW MEASUREMENT*	FLOOR MEASUREMENT*	MATTRESS SIZE*
Margaret Nance	86" L x 39" W	12'2" L x 15'3" W already carpeted	36" x 80"
The Courtyard at Winthrop	1st-3rd floors: 56" L x 28" W 4th floor: 34" L x 48" W	9" x 9" already carpeted	36" x 80"
Lee Wicker	83" L x 64" W	11'6" x 17'	36" x 80"
Phelps	80" L x 59" W	11'6" x 17'	36" x 80"
Roddey Hall	71" L x 44" W	See Floor Plan	36" x 80"
Thomson (East & West)	72" L x 49" W	11'6" x 17'	36" x 80"

\* Slight variations may exist based on specific room



## Common Questions about Living on Campus

### WHY IS LIVING ON CAMPUS IMPORTANT?

Winthrop students are required to live on campus for their first two years. Residential students at Winthrop University tend to have higher grades, are more involved on campus, are more likely to make significant connections with their peers, faculty and staff, and graduate with a four-year degree! Residential living is an essential component of the Winthrop experience that focuses on creating community, building resiliency, and providing a safe environment for students. Residential students have the opportunity to live with people from a variety of backgrounds and perspectives, which plays an educational role both in and out of the classroom. There are many benefits to living on campus, however exceptions can be made for students who are married, post-traditional, veterans, or for those who still live with their parents or guardians within a 50 mile radius of the university. Exemption forms may be found on the Residence Life website.

### WHAT ARE MY HOUSING CHOICES?

Winthrop University has six residence halls. There are a variety of halls to fit any lifestyle. (Descriptions may be found in this booklet and by visiting [www.winthrop.edu/reslife](http://www.winthrop.edu/reslife) and clicking on Residence Halls.) While the style of living in the residence halls varies, all have air conditioning, free WiFi, Eagle Cinema On Demand (Winthrop's free movie streaming site), free laundry and kitchen facilities.

### WHERE'S THE FOOD?

Winthrop University offers a variety of dining options available to students. More information may be found in this booklet or by visiting: [www.winthrop.edu/dining](http://www.winthrop.edu/dining)

### CAN I HAVE VISITORS?

Sure, you can have visitors; but they are required to follow the residence hall guest policy, which is available on our Web Site under Housing Forms and Information. All guests must be signed in at the hall office and escorted at all times by their host. Hosts

are responsible for the behavior of their guests.

### WHAT ABOUT SAFETY AND SECURITY?

The residence hall doors are locked 24/7. Students are free to come and go from their residence hall when they choose. Student Office Hosts provide information and services to residents. All residence halls have outside door card access for after hours entrances. Winthrop University also has police officers commissioned by the State of South Carolina who patrol the campus 24 hours a day.

### WHAT CAN I BRING WITH ME?

Please refer to page 11 for a list of items that are permitted and items that are not permitted. Also, check your Residence Hall contract.

### WHAT ABOUT MY ROOMMATE?

Meeting your roommate is one of the most anticipated events for college students. Your roommate can be someone you know or a person you have never met before. If you know someone you want to room with, you can form a roommate group using instructions provided in the Eaglesnest application process. If you do not have a roommate preference, someone will be selected for you based on the information you provide on your Eaglesnest Housing Application.

If you are requesting a roommate, you should make sure that your Eaglesnest Housing Application, Residence Hall Contract, and Roommate Group are submitted to the Office of Residence Life before the deadline (as indicated in the instructions). While we will do our best to match you with your desired roommate, we cannot make guarantees. More information about living with a roommate will be provided with your housing assignment.

### DO FRESHMEN LIVE IN THE SAME RESIDENCE HALL?

Winthrop does not have any all-freshman halls. The majority of new students are assigned to Margaret Nance, Lee Wicker and Thomson Halls. These residence halls provide the best opportunity for new students to meet and interact with each other, which



### Leave Your Quarters At Home!

Residence Life provides free laundry service to all on-campus residents. You will be provided full access to the laundry machines. Free laundry—another great Advantage of living on campus.





*\*Housing assignments are made without regard to age, color, disability, gender, national origin, race, religion, sexual orientation or veteran status.*

makes the transition to college easier. We make every effort to assign freshmen together in rooms as long as we have empty rooms. When empty rooms are no longer available, freshmen are assigned with returning students. The earlier you pay your \$300 Enrollment Deposit and submit your Eaglesnest Housing Application and contract, the better your chances of being assigned with a freshman roommate.

### **HOW ARE NEW STUDENT ROOM ASSIGNMENTS MADE?**

Each person who completes an Eaglesnest Housing Application is placed in priority order by the date their Enrollment Deposit is received.\* Please be aware that all returning students have already signed up for a space and often particular halls have few spaces for new students. While there is plenty of room available for anyone who is interested in living on campus, your room assignment may not necessarily be in the residence hall you requested as your first choice.

### **CAN I MAKE A ROOM CHANGE?**

Room changes are made on a space-available basis after the first week of classes and must be approved by the Office of Residence Life.

### **DO I ACTUALLY SIGN A CONTRACT?**

Yes! It's important that you read your residence hall contract/lease thoroughly before you sign or digitally sign it. Please pay special attention to the sections detailing your responsibilities, the refund and exemption deadlines and penalties. The contract you sign is for the entire academic year, and there are substantial financial penalties if you request a contract release (contract release and exemption forms may be found at: [www.winthrop.edu/reslife/forms](http://www.winthrop.edu/reslife/forms)). Also please note that the residence hall and

dining service contract does not cover break periods when classes are not in session.

### **DO I HAVE TO LEAVE DURING BREAKS AND HOLIDAYS?**

Residence halls close during break periods. However, students with valid reasons can apply for Break Housing.

Break Housing is available by special permission for Fall Break, Thanksgiving Break and Spring Break. Break Housing is not available during semester break. Food service is not available during break periods.



# Dining Services

On the Winthrop campus, students have a variety of choices in meal plans, dining locations and menus. Winthrop Dining Services offers innovative and creative dining options. There is a location open from 7:30 a.m. to midnight most days to accommodate your busy schedule.



You can always find a great selection of entrées, sides, salads, snacks, beverages and more. With a meal plan, you save time and don't have to worry about shopping, cooking and cleaning. Dining Services does it all for you! You'll want to check out these convenient locations on campus:

## WHAT IF I HAVE SPECIAL DIETARY NEEDS?

Simple Servings, located in the Eagle Eatery, addresses ingredients that account for the most common food-allergies (milk, eggs, wheat, soy, shellfish, fin fish, peanuts, and tree nuts) Simple Servings is also made with gluten-free ingredients, and also appeals to students who prefer simple foods.

Please speak to a manager in any of the dining locations about your special needs or visit [www.winthrop.edu/dining](http://www.winthrop.edu/dining). We are here to help!

## WHAT IS CAFÉ CASH?

Cafe Cash is included with your meal plan. Your Café Cash account works like a debit card – no need to carry cash. Purchases are deducted from the balance in your account. The information is stored on your Winthrop I.D. card. Café Cash can be used at

any of the campus dining facilities, including Eagle Express. Café Cash can also be used for concessions at all Winthrop athletic events. Unused Café Cash will carry over from fall to spring, but any remaining Café Cash in your account after spring semester will be lost. If you run low on Cafe Cash, you can also purchase Eagle Bucks, which are like Cafe Cash, except Eagle Bucks do not expire.

## WHAT'S FOR DINNER?

Daily menus and nutritional information are posted on our website, [www.winthrop.edu/dining](http://www.winthrop.edu/dining) and on Everyday, our mobile app. View daily menus, nutritionals and more on the go right from your phone. Dining's Facebook and Instagram channels also keep campus updated on special events, discounts and dining activities at WinthropDining1.

## EAGLE EATERY *at* THOMSON

- > all-you-care-to-eat dining

## MARKLEY'S FOOD COURT *at the* DIGIORGIO CAMPUS CENTER

- > Chick-fil-A
- > Vibes Juice Bar
- > Flipp It
- > The Crust
- > Triple G's Grill
- > Mein Bowl
- > Einstein Brother's Bagels
- > Starbucks
- > Simply To Go

## EAGLE EXPRESS C-STORE *at* THOMSON HALL

- > variety of snacks, beverages, grocery items, grab & go and more





## *the* **FRESHMAN EXPERIENCE**

The Freshman Experience is designed to help first year residents build a solid personal and academic foundation within the context of a diverse and inclusive community.

Studies have consistently shown that for most first-year students, on campus dining and living has numerous educational and social benefits. Along with assisting the transition from high school to college, some of the many benefits of on-campus dining include: meeting new friends, convenience, an overall academic advantage and the ability for students to easily budget dining funds.

An important part of a student's total educational experience is making new friends and participating in the numerous activities offered by Winthrop University. Just by eating on campus, students will have the ability to meet people from all over the United States and the world. Many of the friendships students will make while dining on campus will last a lifetime.



## **Freshman Experience** *Meal Plans*

A first-year student who lives on campus must subscribe to either the All Access or All Access Plus meal plan for their first two semesters.

### **ALL ACCESS**

Unlimited Access to the Eagle Eatery at Thomson

- + 80 Eagle Meals
- + \$100 Café Cash

### **ALL ACCESS PLUS**

Unlimited Access to the Eagle Eatery at Thomson

- + 80 Eagle Meals
- + \$200 Café Cash

Eagle Meals:

A certain number of meal swipes may be used at Markley's Food Court locations, including Einstein Bros Bagels, Chick-fil-A, and Mein Bowl in exchange for a set of menu items.

To see prices and upperclassman meal plan options, please refer to our website:  
[www.winthrop.edu/dining](http://www.winthrop.edu/dining)



## **For More Dining Information**

Winthrop University Dining Services  
 112 Thomson Hall  
 Rock Hill, SC 29733  
 803/323-2119

[www.winthrop.edu/dining](http://www.winthrop.edu/dining)





# RESIDENCE LIFE

## *advantage*

“I have lived on campus at Winthrop University since I transferred here last year. I experienced living in a total of three different residential facilities with different community styles. I have thoroughly enjoyed my residency at Winthrop University and also being involved in many endeavors on campus. On-campus living gives students the opportunity to engage in a variety

of activities and events as well as meeting new people in the community and developing friendships that benefit you personally and academically. Making lifelong connections as well as connecting with people who have the same interests as you might, is a priceless experience that you will never forget!  
-Paige Watford, junior

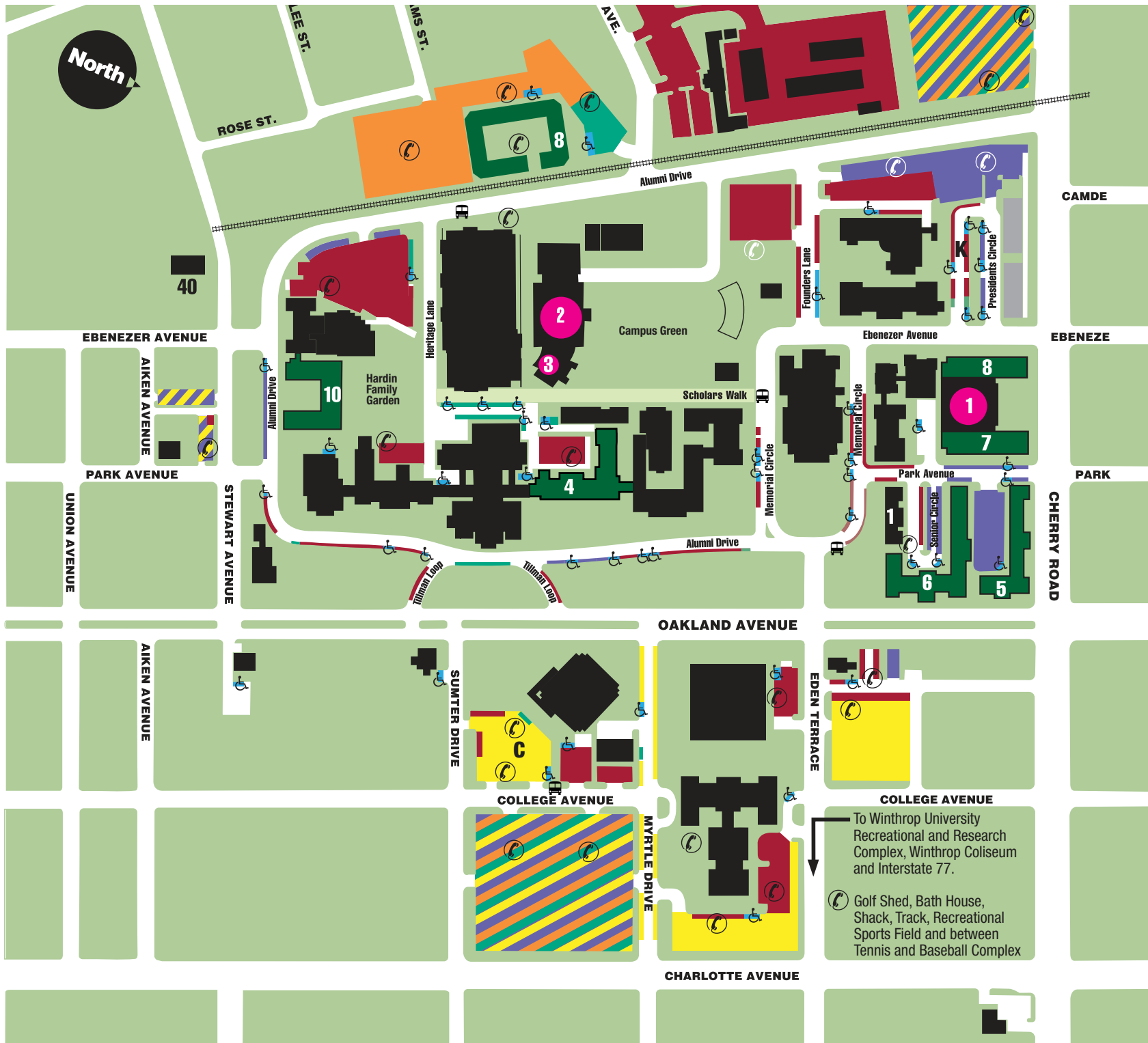
## **WANT** *more* INFORMATION?

We know you probably still have some questions. Go to our website at [www.winthrop.edu/reslife](http://www.winthrop.edu/reslife) to view some of the topics listed below:

- Living with a Roommate
- Check-in/check-out Procedures
- Residence Hall Staff and Activities
- Emergency Procedures
- Room Changes
- Post Office Boxes
- Room Repairs
- Room Personalization/Lofts
- Residents' Rights
- Referral Services
- Hall Opening and Closing Schedule
- Leadership Opportunities
- Safety and Security



# Campus Map



## Parking Area Legend

Faculty and Staff	Commuter	Visitor
Resident	Courtyard Only	Commuter/Courtyard/Resident/Visitor
Disabled	Resident and Commuter	

### Dining

1. Eagle Eatery at Thomson
2. Markley's at the Center
3. Starbucks™

### Residence Halls

4. Margaret Nance	7. Thomson East	10. Roddey Hall
5. Lee Wicker	8. Thomson West	
6. Phelps	9. The Courtyard at Winthrop	

For more information on traffic and parking enforcement, visit [www.winthrop.edu/police](http://www.winthrop.edu/police)



---

## *Residence Life*

Office of Residence Life  
Division of Student Affairs  
Rock Hill, SC 29733  
803/323-2223

[www.winthrop.edu/reslife](http://www.winthrop.edu/reslife)  
[www.facebook.com/WUResidenceLife](https://www.facebook.com/WUResidenceLife)  
[www.twitter.com/WUResidenceLife](https://www.twitter.com/WUResidenceLife)  
[www.instagram.com/WinthropResLife](https://www.instagram.com/WinthropResLife)