

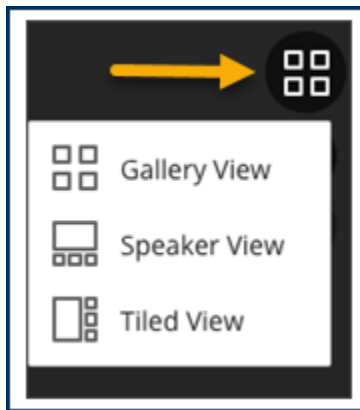
Collaborate Ultra Webcam Views

Overview

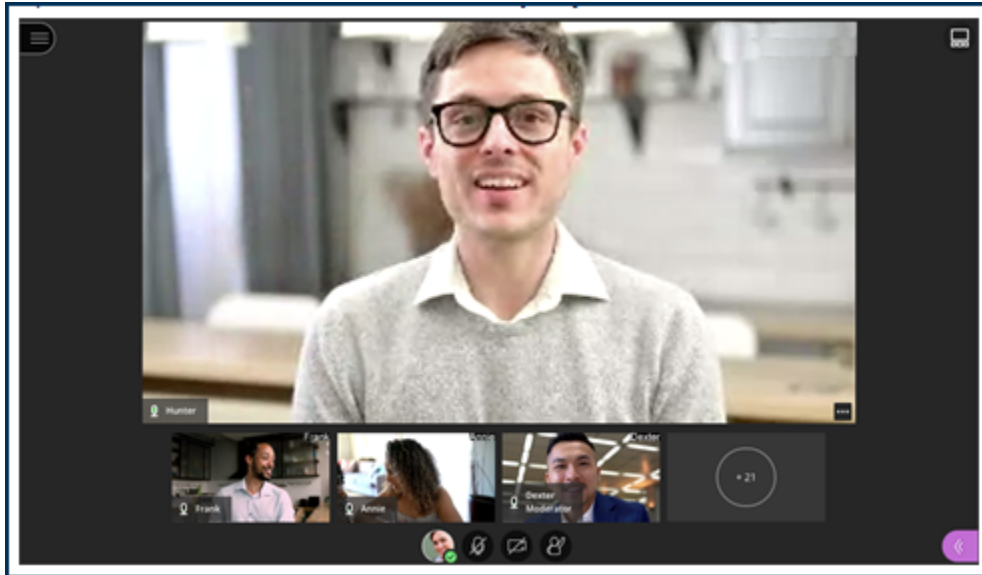
This tutorial will explain the three webcam views that are available in **Collaborate Ultra**. You can decide how many videos you want to see and how prominent those videos should be with Speaker view, Tiled view, and Gallery view.

Step 1

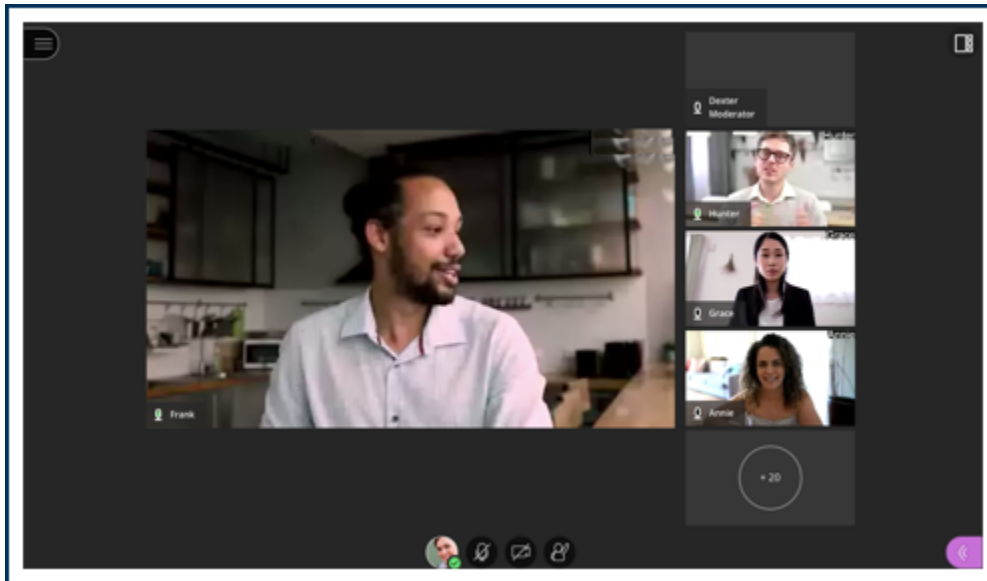
Speaker view is the default view when you join a Collaborate Ultra session. Select the Change view button in the upper right of the screen to switch between views.



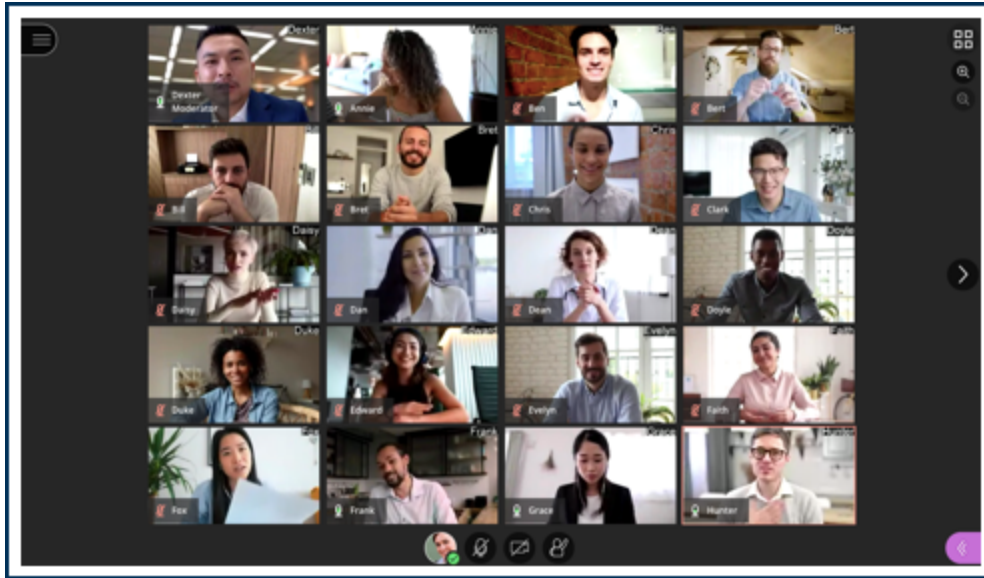
Tiled and Speaker views emphasize who is speaking. These views show up to 4 videos with one video larger than the others. The larger video changes to match the active speaker. The only difference between Tiled and Speaker views is layout. Gallery view lets you see up to 25 attendees on a page.



Speaker View



Tiled View



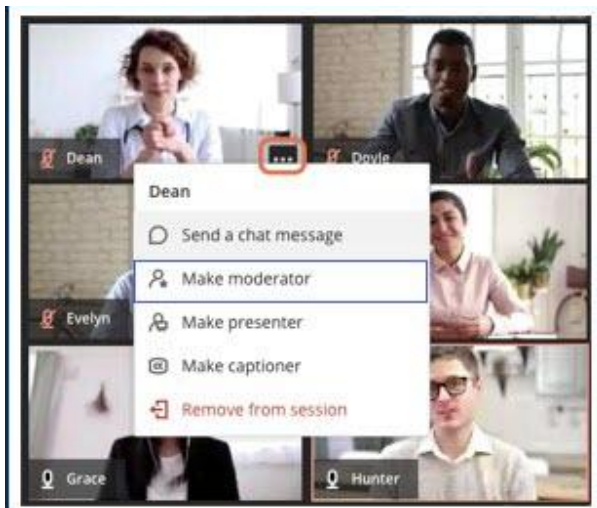
Galley View



The number of videos you see depends on the support for your browser, device, and session size. You'll also see fewer videos if you have the Session menu or Collaborate panel open.

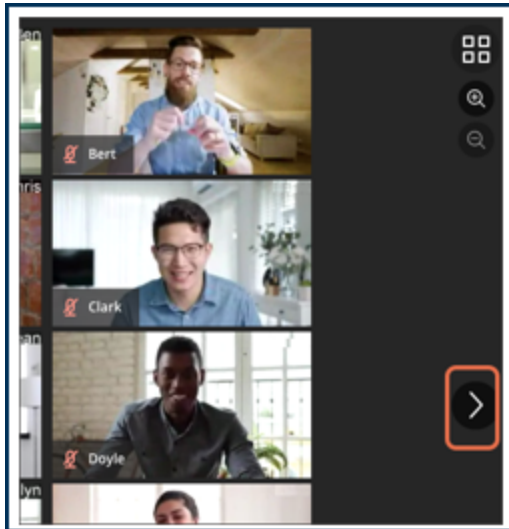
Step 2

In Gallery view, attendee videos are in alphabetical order. Moderators appear at the start of the list on the first page. To move an attendee's video to the top of the list, point to the attendee, select the Attendee Controls button, then select Make Moderator.



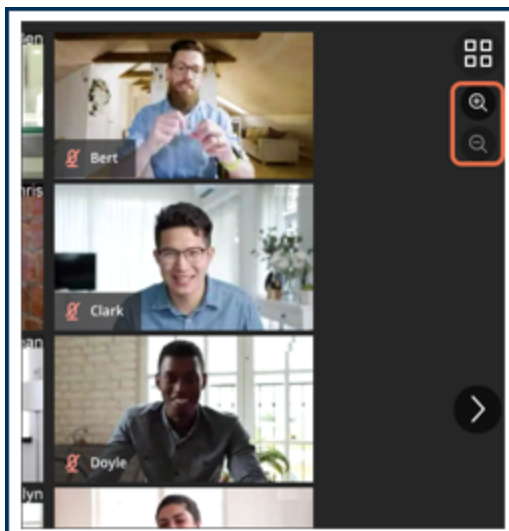
Step 3

Use the arrows on either side of the gallery to see more videos. As you move between pages, the speaker's video appears as a thumbnail in the bottom right corner of the main content area.



Step 4

Use the zoom controls on the right of the gallery to see fewer and larger videos at a time or vice versa.



Step 5

In any view, point to an attendee and select the Attendee Controls button to send them a private chat, promote a participant, mute the attendee, or remove the person from the session.

